

Established 1971

**Piltown
ENGINEERING**

Manufacture & Supply

Based in Kilkenny Ireland Piltown Engineering boasts over 30 years of experience pioneering technological processes and advancing engineering innovation.

**Piltown
ENGINEERING**

Paul McGrath
General Manager

P: +353 51 643131
E: sales@piltownengineering.ie
W: www.piltownengineering.ie
A: Quarrylands, Fiddown, Co Kilkenny,
Ireland, E32 FD32

Rev C

- Tubular columns
- Octagonal columns
- Traffic solutions
- Bespoke solutions
- Sports lighting
- CCTV columns



T: +353 51 643 131

E: sales@piltownengineering.ie

W: www.piltownengineering.ie

Quarrylands, Fiddown,
County Kilkenny, Ireland



Piltown Engineering is a private limited company Established in 1971

Piltown engineering is Based in Kilkenny Ireland and boasts over 30 years of experience pioneering technological processes and advancing engineering innovation.

Company History

Primarily the company started in mechanical engineering and later diversified into the manufacturing side of engineering, making outdoor lighting furniture. In 1982 the company started production of stepped tubular lighting columns and associated brackets.

In 2000 the company included the manufacturing of public lighting and auxiliary pillars and enclosures. The company has progressed over the years through innovation and investment to the point where a standalone manufacturing plant on a green field site specifically to produce octagonal and multi-sided columns and masts was built.

The company is based in Fiddown County Kilkenny and boasts over 30 years of experience in its chosen specialist field. Piltown Engineering is both a pioneer and an innovator. Lighting columns are manufactured from 3 up to 30 meters. The 3 to 12 metre poles and associated brackets are carried ex-stock, while special orders have a maximum delivery time of just three weeks.

Manufacturing

Piltown Engineering manufactures the entire product range in its manufacturing facility in Fiddown. The Fiddown facility has been in production since 2007 and is one of the most advanced facilities in Western Europe using the most up to date technology.

The octagonal columns are cut, bent and longitudinal sub arc welded with thermal stress relief. The tubular columns are cut and prepared for assemble using our 8mtr pipe plasma and they are circumferentially welded by our team of experienced coded welders.

The pillars, brackets, accessories and all our product subcomponents are produced by our experienced team of sheet metal fabricators and welders. Our pillars can be amended to your requirements.

***“Our company mission is to ensure that we provide
the best service to the highest standards”***

—Paul McGrath General Manager

Services & Finishes

Trade

A wide product range includes amenity lighting columns, sportsfloodlighting masts and CCTV towers, pillar enclosures as well as a variety of outreach brackets, t bars and accessories.

Design

In conjunction with our structural design team we are sure to meet your project requirements.

Delivery

We offer fast and efficient nationwide delivery. All our delivery trucks have truck mounted cranes to promptly deliver and unload goods.

Hot-dipped galvanising

Hot dipped galvanising is carried out to the latest BS EN 1461 standard and gives excellent internal and external protection against corrosion. Careful choice of high quality steel results in a thick and even zinc coating.

Root protection

An additional protection system is applied to the root section of a column, and extends 50-300mm above ground level.



Quality Invisioned



Marine environment

Products exposed to corrosive environments such as proximity to the sea may require additional protection. We can have our products shot blasted to further increase the microns of zinc protection applied to extend the product life cycle. Further to the additional zinc pick up the product can be furthermore protected by powder coating or painting using a combination of epoxy base coating and polyurethane top coating to preserve the zinc finish from corrosive elements.

Spray painting

We can offer various paint finishes in the full range of British Standard or RAL colours to give your products that individual or corporate look. Columns can be matched to a light fitting or your company colours. Spray painting is carried out to the highest standard in our dedicated painting workshop. The addition of wet painting offers great protection from weather, corrosion, climate effects and chemicals. It is the most flexible of finishes with respect to speed, material and dimensions.

Powder & plastic

We offer a powder coating or plastic coating finish to our products in the full range of British Standard or RAL colours. Powder coating is the process of coating a surface in which a powder material is applied using an electrostatic or compressed air method. The applied powder is then heated (cured) to its melting point, after which it flows to form a smooth film which dries to a firm, durable finish very resistant to scratches, cracking, peeling, UV rays and rust.

Octagonal Columns

Octagonal columns are popular due to their low cost, strength and easy accessibility using elevated work platforms or cherry pickers.

Smaller octagonal columns are suited to medium sized floodlighting requirements and areas such as commercial developments, housing estates and small recreational areas.

Larger octagonal columns are suited to larger commercial applications such as: sporting arenas, road and motorway lighting allowing for installation of multiple light fittings.

Our standard octagonal columns range from 3 to 30 meters, however we can design and manufacture columns to any height, width and specification to suit the requirements of our clients. The full range of octagonal columns are available either root mounted or base plate mounted (flanged).



Standard features

- Galvanised internally and externally to BS EN 1461
- Designed to IS EN 40 and comply with the requirements of the Department of the Environment and local authorities.
- Welded in steel access door frame with recessed weather strip, complete with a flat steel door fitted and secured by two triangular headed stainless-steel bolts.
- Base compartment is large enough to offer easy access to the equipment, which can be mounted on the hardwood baseboard within.
- Bitumen paint is applied internally and externally 50-300mm above the planting depth for protection.
- Suitable for post top mounting or a variety of outreach/extension brackets and T bars.

Optional feature

- Can be painted or powder coated to customer specifications.

Mid Hinged Columns



Also known as lowering and raising mid-hinged columns are an alternative to fix tapered octagonal columns. They eliminate the need for an elevated work platform or cherry picker, reducing on-going column maintenance costs.

Lighting, CCTV, communications and other equipment can be maintained safely and effectively using the column's simple lowering and raising device.

These are popular in remote or restricted areas where elevating machinery is not readily available or access is limited.

Also in situations where working at heights is not permitted Sites may include car parks, public transport stations, sports facilities, airports and communication installations.

Our standard range of mid-hinged columns come as root mounted or base plate mounted in 4 — 12 meters heights. However, we can design and manufacture columns to various heights, widths and specification, to suit the requirements of our clients.

Columns are galvanised internally and externally to BS EN 1461 and can also be either painted or powder coated to a variety of colours that we offer.


Its popularity is all down to quick, safe and easy operation, together with long term durability, often in harsh environments.

Sports Lighting



The ballast/ignition switch gear required for flood lighting can be (depending on size) conveniently housed within the column with use of large oval sport access doors or can be fitted in a pole mounted or ground based pillar.

The advantages of ground based pillars are ease of use, installation, maintenance and it removes the need to work at heights. Pole mounted pillars offer resistance to vandals/flooding as the height elevates the pillar clear of hazards.



High mast lighting is the most efficient method of lighting large areas with the minimum number of obstructions.

GAA, Soccer, Rugby, Tennis courts and stadiums all benefit from our approach to floodlighting solutions.

Masts are ideal for

- Illuminating large sports areas with minimum spectator view obstruction.
- Illuminating car parks, goods storage yards, loading bays, etc.
- Use in confined spaces and do not require a large area to be cleared.
- Any height mast shaft from 10 to 30 meters manufactured by us to whatever specification is required.
- Reduced cost of continued maintenance of mast & fittings for greater safety.
- Modern luminaires (depending on manufacturer) have a minimum of over 5,000 hours of illumination which reduce the need for yearly servicing and maintenance.

Sports Lighting Based Hinged



Our range of base-hinged raising and lowering masts come in mounting heights of 8 to 20 meters and are designed to carry various head loads depending on mast height and fitting selection.

Ideal in situations where there is enough ground clearance for the mast to be raised and lowered, as it offers easy and cost effective assembly, installation and on-going maintenance. Masts are manufactured to match the specific requirements of each project and can be used for various applications.



Raising and lowering of the mast is achieved by means of an electric or manual hand pump and a hydraulic ram. The manual hand pump has a cycle time of about 15 minutes and is suitable for smaller masts.

An electric power pump has 3-4 minute cycle but requires a portable power supply or access to the mains supply.

Ball Stop Net Poles



We design and manufacture net poles to suit any size pitch and variety of nets.

Both root mounted and flange mounted poles are available to suit site conditions.

Features

Lowering and raising columns are ideal for pitches/playing areas with hard to access spaces.

Remove the need for cherry picker/scissors lifting equipment for maintenance.

Avoid damage to playing surface caused by heavy cherry picker/scissors lifts.

Allow essential maintenance/focusing to be carried out at ground level.

Maintenance/lamp replacement can be carried out in winter months.

Club can undertake maintenance if required.



Tubular Columns

Stepped tubular columns provide a cost effective decorative alternative to our standard tapered octagonal column range. Columns are supplied galvanised and can be painted or powder coated in a variety of colours or supplied with decorative kits to achieve the heritage look.

Stepped tubular columns are manufactured from different diameter tubes, with the base section being circumferentially welded to the top shaft(s). The shaft is supported internally by heavy duty supports welded to both base and shaft sections to create strong internal joint(s).

The full range of tubular columns are available either root mounted or base plate mounted (flanged) and with framed or flush access door. The flush access door is not acceptable for local authorities "taking charge" of developments, however it is suitable for private developments i.e. car parks, yards, walkways, etc.



Standard features

- Galvanised internally and externally to BS EN 1461.
- Designed to comply with the requirements of EN40 the Department of the Environment and local authorities.
- Base compartment is large enough to offer easy access to the equipment, which can be mounted on the hardwood baseboard within.
- Bitumen paint is applied internally and externally to the planting depth and extends 50-300mm above ground level for additional protection.
- 3 to 6 meter columns available with 76 or 60mm spigot to suite a wide range of post top fittings or a variety of outreach/e tension brackets and T bars.
- 8 to 10 meter columns come with 76mm spigot as standard suitable for post top mounting or a variety of outreach/extension brackets and T bars.



Optional features

- Can be painted or powder coated to the BS and Ral colour chart to customer specifications.
- Decorative kits available to create the heritage look.
- Various top spigots available to suit a wide range of post top fittings.
- Flush door columns offer a cost effective solution to any lighting needs.



Pedestrian Crossing



Radar speed display

Pole-mounted speed signs are often deployed in school zones, neighbourhoods and high-accident areas and locations where obeying the speed limit is critical.

Piltown Engineering offers a range of standard and bespoke columns to suit any pole-mounted display sign application.

Columns are designed to offer room for electrical equipment within the base of the column as well as ease of installation and maintenance.

Pedestrian Crossing

- Available to suit various types of traffic beacons including the Belisha beacon range.
- Choice of finishes available: galvanised, painted/ powder/plastic coated (Black/White) or with injection moulded protective plastic tubing (Black/White).

Poles are available in various heights with a range of features such as straight or cranked.

- Framed access door as standard.
- Available root mounted or flange mounted.



Low level access pole

Low level access poles offer an economical alternative to the standard range of column. The flush fit door achieves a more aesthetically pleasing appearance to the column.

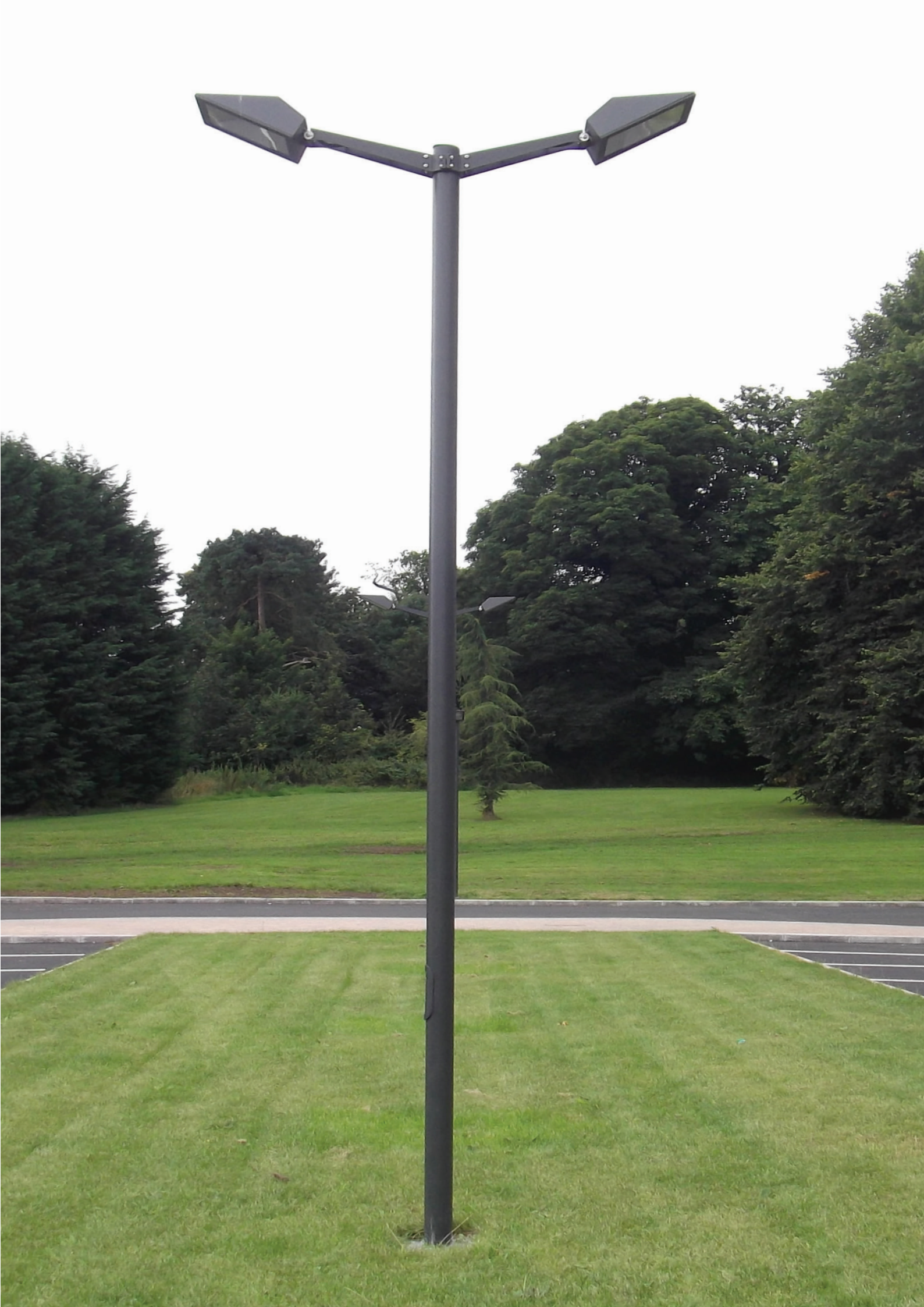
Constant diameter Columns

These columns have the same diameter tube throughout the length of the column giving it more esthetical pleasing architectural appearance.

Columns are suitable for post top fittings, clamp on decorative brackets and variety of single and double outreach brackets. Constant diameter columns can be supplied with flush fitting or framed door.



Can be painted or powder coated to the BS and RAL colour chart to customer specifications.





Decorative Columns



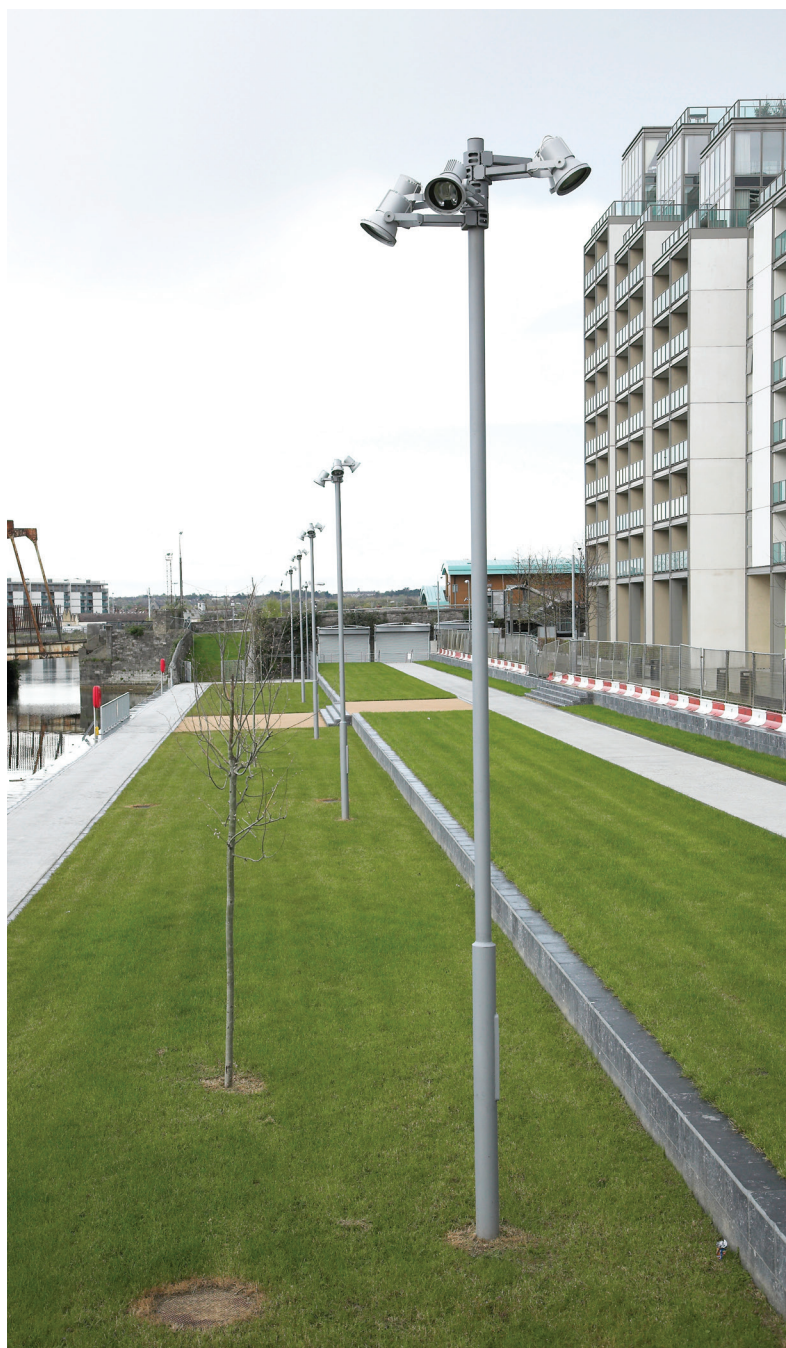
A decorative or a heritage look can be achieved by combining standard tubular columns with embellishment kits.

These decorative brackets to give the development that individual finish.

Bespoke Columns

Although we mainly produce 'standard' columns and brackets we have the capability to produce special designs and schemes. Our staff have years of experience working with architects, contractors, engineers and local authorities, with the ability to turn ideas into reality.

We regularly take on and produce project 'specials' for customers where the standard columns and brackets are just not suitable or a special design is required. We take our customer ideas and requirements on board to create something truly unique.



Bespoke Columns



**4mt multisided column
powder coated RAL 7030
outside Nursing Home, Loughrea,
Co Galway.**

CCTV Columns

Piltown Engineering can manufacture and supply a wide range of CCTV towers for many different applications. The structurally rigid camera poles are ideal for traffic surveillance as well as all other security monitoring applications.



Our range of CCTV towers:

- Static tubular octagonal (3-10mtrs)
- Base-hinged tubular octagonal (3-10mt)
- Cabinet-base tubular (4-8mt)
- Square (4-8mt)
- Custom made

Features:

- Height from 3 to 25meters
- Flanged mounted or root planted
- Wide variety of styles available:
- Customised design of camera bracket to match the camera required by customer.

Application:

- Speed dome camera
- Fixed camera
- Zoom camera



Pillars

Standard Features

- Constructed from 3mm sheet steel.
- Galvanised to BS EN 1461.
- Backboard made from 12-18mm thick exterior grade marine plywood, treated with low flame spread wood preservative and can be removed for wiring.
- Earth lead connection supplied from pillar body to door.
- Pillars are fitted with hinged fully removable lockable doors.
- Hinges are manufactured from stainless steel.
- Tri-head tamper proof lock(s) fitted as standard.
- Danger warning labels fitted to doors can be vented to disipate heat and condensation.



Enclosures

Bespoke

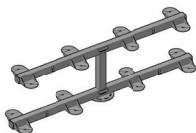
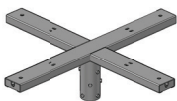
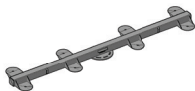
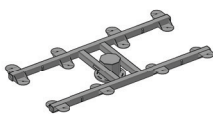
Designed at the outset to a specific customer requirement, these pillars have found a greater range of applications across a wide variety of sectors.

Using the same high-quality materials as the standard product derivatives, the bespoke kiosks offer practical solutions to onerous demands for the packaging of electrical command and control equipment.

- Extra depth allows for a wide variety of applications and is particularly popular with Utility, Telecom and Switchgear contractors.
- Lifting slots/lugs provided for easy transportation and installation. Additionally “yale locks” and key safe housing can be fitted for added security.
- Choice of back board including: 12 & 18mm plywood, 12 & 18mm marine ply, galvanised sheeting.
- Rubber gasket door seal fitted on bigger pillars to minimize ingress of moisture and dust.



T Bar Columns



Features

- Designed for use with standard 68mm top octagonal or 76 top tubular columns.
- Designed for use with standard 68mm top octagonal
- or 76mm top tubular columns.
- Have a welded steel weather cap.
- Galvanised to BS EN 1461.
- Supplied complete with necessary bolts for mounting to the column.
- Various hole centres available.
- Numerous mounting options i.e. 90/120/180/270 degrees.
- Available in single, double, triple and quad configurations.
- Sports lighting T bars available with 1 to 24 light fittings.

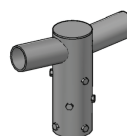
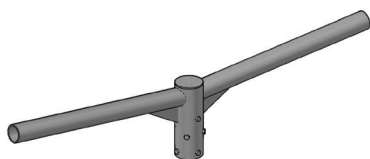
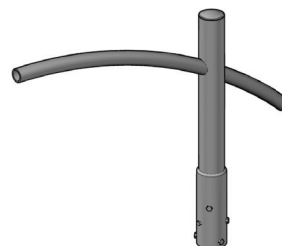


Outreach & Extension Brackets

Piltown Engineering has a wide variety of outreach and extension brackets available ex-stock from 150-2000mm projection and come with a 33, 42, 48 or 60mm entry.

We have numerous options available to supply the street lighting industry sector with a variety of brackets for columns or wall mounting.

We take orders for single fabricated replacement brackets as well as multiple new items. If a single bracket needs designing or replacing then we are the company to choose.



Standard Features

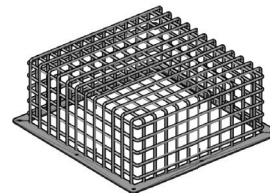
- Brackets have 5 degree up lift as standard.
- Can be manufactured with different degree of uplift to customer specifications.
- Have a welded steel weather cap.
- All brackets with projection 700mm and longer have a welded gusset for extra support.
- Fabricated from tubular steel
- Galvanised to BS EN 1461.
- Stainless steel bolts secure each bracket arm to the column.
- Designed for use with standard 68mm top octagonal or 76mm top tubular columns



Accessories

Protective cages

- Can be manufactured to suit variety of light fittings, CCTV cameras or flood lights.
- Available pole mounted, wall mounted, or ground based
- Galvanised to BS EN 1461



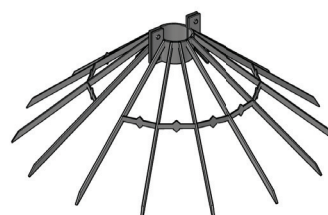
Spare access doors & keys

- Access cover doors available to replace ones damaged or misplaced on site. Please quote the size of the column when ordering an access door.
- Replacement doors come complete with fixing screws and retaining nut.
- Keys for access doors for columns and enclosures supplied with every order, however replacements available on request.



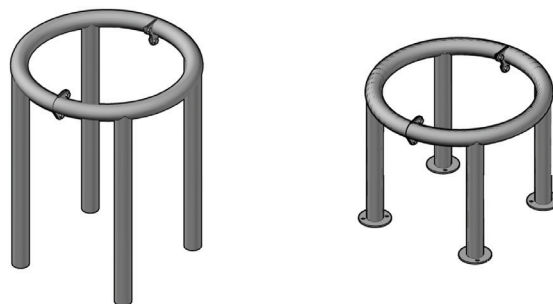
Anti-climb guard

- Can be manufactured to suit variety of columns: tubular, octagonal, box or lattice towers.
- Galvanised to BS EN 1461



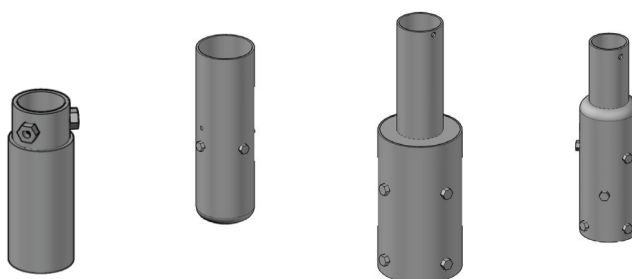
Column protection barrier

- Column protectors are ideal to shield the lighting columns, signs, small trees or enclosures and are manufactured from 60mm diameter steel tube.
- Galvanised to BS En 1461 or can be painted or powder coated to customer specification.
- To be concreted directly in the ground. Optional base plates or ground sockets are available.



Adaptors & reducers

- Stainless steel bolts secure each adaptor to the column.
- Designed to increase or decrease the top diameter of.
- Octagonal or tubular column to suit an outreach bracket or a post top fitting.
- Galvanised to BS EN 1461.
- Can be painted or powder coated to customer specifications.



Pole top caps

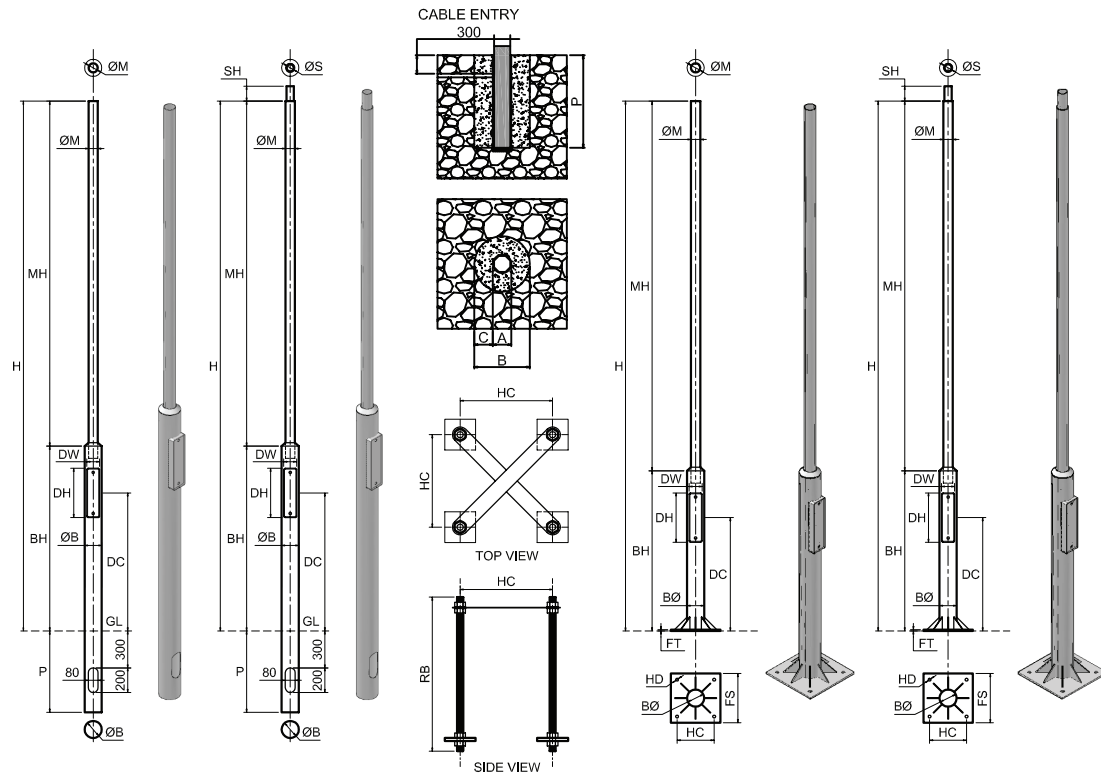
- Plastic cap seals off exposed column top opening.
- External fit Octagonal/Tubular Internal fit Tubular. material to withstand weather and vandal damage.



Column number labels

- Sequential numbers printed on a durable material to withstand weather and vandal damage.





Tubular Rooted Column Dimensions

Column type	H Height	P Planting depth	MH Mast Height	MØ Mast Diameter	BH Base Height	BØ Base Diameter	SH Spigot Height	SØ Spigot Diameter	DW Door width	DH Door height	DC Door center	MT Material thickness	MG Material grade	Mass (Kg)
TC3X60	3000	500	2000	60	1000	114	N/A	N/A	105	400	620	3	S275	27
TC3X76	3000	500	2000	76	1000	139	N/A	N/A	105	400	620	3	S275	32
TC4X60	4000	660	2400	60	1600	114	N/A	N/A	105	400	1220	3	S275	41
TC4X76	4000	660	2400	76	1600	139	N/A	N/A	105	400	1220	3	S275	41
TC4X76 LLF	4000	660	3000	76	1000	139	N/A	N/A	100	400	620	3	S275	38
TC4X76-60s	4000	660	2400	76	1600	139	120	60	105	400	1220	3	S275	38
TC5X76	5000	660	3400	76	1600	139	N/A	N/A	105	400	1220	3	S275	46
TC5X76 LLF	5000	660	4000	76	1000	139	N/A	N/A	100	400	620	3	S275	42
TC5X76-60S	5000	660	3400	76	1600	139	120	60	105	400	1220	3	S275	46
TC6X76	6000	1000	4000	76	2000	139	N/A	N/A	105	400	1500	3	S275	58
TC6X76 LLF	6000	1000	5000	76	1000	139	N/A	N/A	100	400	620	3	S275	49
TC6X76-60S	6000	1000	4000	76	2000	139	120	60	105	400	1500	3	S275	58
TC7X76	7000	1000	4500	76	2500	139	N/A	N/A	105	400	2000	3	S275	70
TC7X76 LLF	7000	1000	6000	76	1000	139	N/A	N/A	100	400	620	3	S275	54
TC7X76-60S	7000	1000	4500	76	2500	139	120	60	105	400	2000	3	S275	70
TC8X76	8000	1500	6000	114-89	2000	168	N/A	N/A	120	624	1485	3	S275	113
TC8X76-60S	8000	1500	6000	114-89	2000	168	120	60	120	624	1485	3	S275	113

Tubular Flanged Column Dimensions

Column type	H Height	MH Mast Height	MØ Mast Diameter	BH Base Height	BØ Base Diameter	SH Spigot Height	SØ Spigot Diameter	FS Flange size	FT Flange thickness	HD Hole Ø	HC Hole centers	RB Rag bolt sizes	DW Door width	DH Door height	DC Door to center	MT Material thickness	MG Material grade	Mass (Kg)
TFC3X60	3000	2000	60	1000	114	N/A	N/A	400	10	24	300	M24X500	105	400	620	3	S275	29
TFC3X76	3000	2000	76	1000	139	N/A	N/A	400	10	24	300	M24X500	105	400	620	3	S275	35
TFC4X60	4000	2400	60	1600	114	N/A	N/A	400	10	24	300	M24X500	105	400	1220	3	S275	42
TFC4X76	4000	2400	76	1600	139	N/A	N/A	400	10	24	300	M24X500	105	400	1220	3	S275	44
TFC5X60	5000	3400	60	1600	114	N/A	N/A	400	20	28	300	M24X500	105	400	1220	3	S275	44
TFC5X76	5000	3400	76	1600	139	N/A	N/A	400	20	28	300	M24X500	105	400	1220	3	S275	51
TFC5X76-60S	5000	3400	76	1600	139	120	60	450	20	28	300	M24X500	105	400	1220	3	S275	51
TFC6X76	6000	4000	76	2000	139	N/A	N/A	450	20	28	300	M24X500	105	400	1500	3	S275	59
TFC6X76-60S	6000	4000	76	2000	139	120	60	450	20	28	300	M24X500	105	400	1500	3	S275	59
TFC8X76	8000	6000	114-89	2000	168	170	76	450	20	28	300	M28X1000	120	624	1485	3	S275	110

A: Storm Pipe/Polytwin/Rigi Drain 3-7mt - 300mm, 8-10mt - 400mm

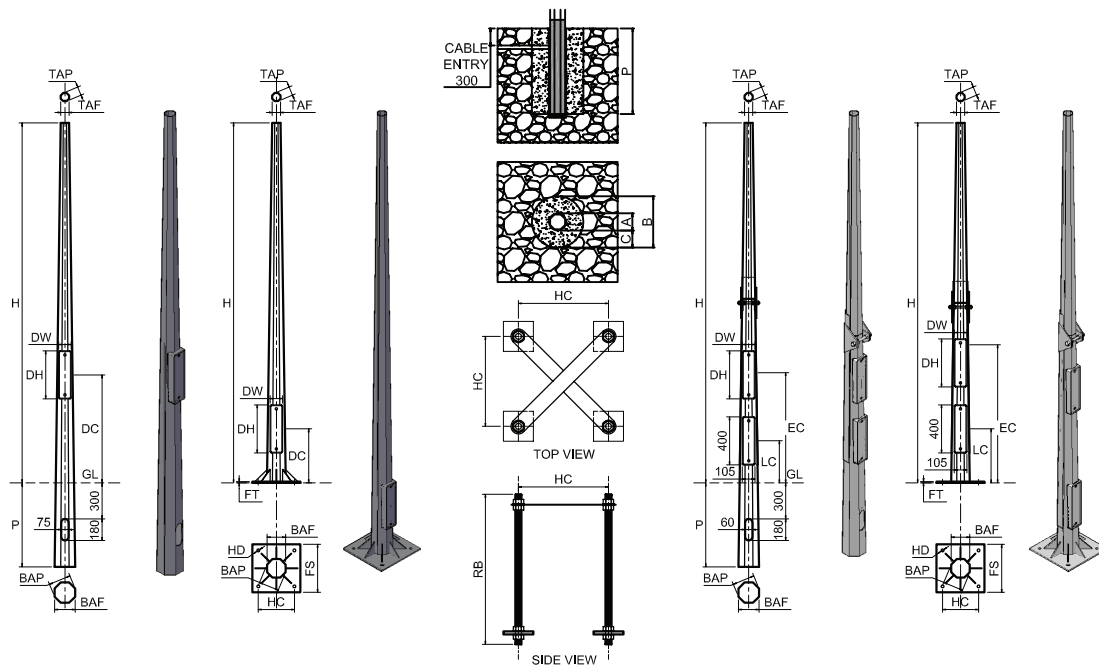
B: Trench size - to be determined on site

C: Back fill - Approx 150mm - 300mm Compacted 25-30Nm concrete

Concrete/Slab/Block under pot to stop column subsiding

All dimension are in millimeters. See elevations for abbreviations.

Additional sizes are available, contact for more information



Octagonal Rooted Column Dimensions

Column type	H Height	P Planting depth	TAP Top across points	TAF Top across flats	BAP Bottom across points	BAF Bottom across flats	DW Door width	DH Door height	DC Door center	MT Material thickness	MG Material grade	Mass (Kg)
OC3X76	3000	700	76	68	184	170	105	400	900	3	S275	37
OC4X76	4000	700	76	68	184	170	105	400	900	3	S275	50
OC5X76	5000	700	76	68	184	170	105	400	1200	3	S275	56
OC6X76	6000	1000	76	68	184	170	105	400	1500	3	S275	68
OC8X76	8000	1500	76	68	267	247	120	624	1500	3	S355	125
OC8X76 LD	8000	1200	76	68	216	200	120	624	1500	3	S355	111
OC8X76 1 piece	8000	1200	76	68	216	200	120	624	1500	3	S355	120
OC10X76	10000	1700	76	68	297	274	120	624	1500	3	S355	170
OC10X76 LD	10000	1500	76	68	260	240	120	624	1500	3	S355	160
OC12X76-1.7PD-3	12000	1700	76	68	325	300	120	624	1500	3	S355	226
OC12X76-2PD-3	12000	2000	76	68	325	300	120	624	1500	3	S355	235
OC14X76-2PD-4	14000	2000	76	68	340	311	120	624	1500	4	S355	341

Octagonal Flanged Column Dimensions

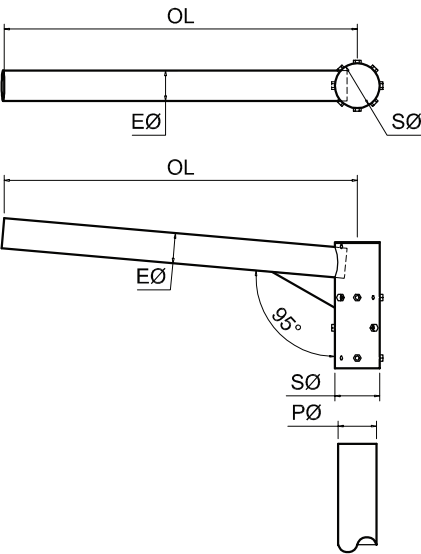
Column type	H Height	TAP Top across points	TAF Top across flats	BAP Bottom across points	BAF Bottom across flats	FS Flange size	FT Flange thickness	HD Hole ϕ	HC Hole centers	RB Rag bolt sizes	DW Door width	DH Door height	DC Door to center	MT Material thickness	MG Material grade	Mass (Kg)
OFC3X76	3000	76	68	168	155	400	10	24	300	M24X500	105	400	450	3	S275	41
OFC4X76	4000	76	68	168	155	400	10	24	300	M24X500	105	400	450	3	S275	48
OFC5X76	5000	76	68	168	155	400	10	24	300	M24X500	105	400	1200	3	S275	64
OFC6X76	6000	76	68	168	155	400	10	24	300	M24X500	105	400	1500	3	S275	68
OFC8X76	8000	76	68	238	220	400	20	28	300	M28X1000	120	624	1500	3	S355	130
OFC10X76	10000	76	68	260	240	400	20	28	300	M28X1000	120	624	1500	3	S355	153
OFC12X76	12000	76	68	303	280	450	20	28	350	M28X1000	120	624	1500	3	S355	223
OFC14X76	14000	76	68	325	300	450	20	28	350	M28X1000	120	624	1500	4	S355	330

Octagonal Hinged Rooted Column Dimensions

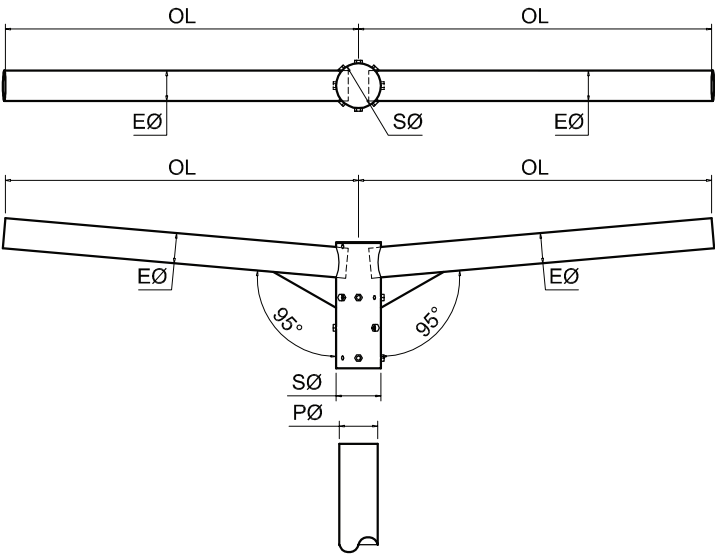
Column type	H Height	P Planting depth	TAP Top across points	TAF Top across flats	BAP Bottom across points	BAF Bottom across flats	DW Door width	DH Door height	EC Electrical Chamber	LC Locking Chamber	MT Material thickness	MG Material grade	Mass (Kg)
OHC3X76	3000	700	76	68	184	170	105	400	900	350	3	S275	67
OHC4X76	4000	700	76	68	184	170	105	400	900	350	3	S275	80
OHC5X76	5000	700	76	68	184	170	105	400	900	350	3	S275	93
OHC6X76	6000	1000	76	68	184	170	105	400	1500	450	3	S275	98
OHC7X76	7000	1200	76	68	238	220	105	400	1500	450	3	S355	147
OHC8X76	8000	1500	76	68	267	247	105	400	1500	450	3	S355	179
OHC10X76	10000	1700	76	68	297	274	120	624	1500	600	3	S355	220

Octagonal Hinged Flanged Column Dimensions

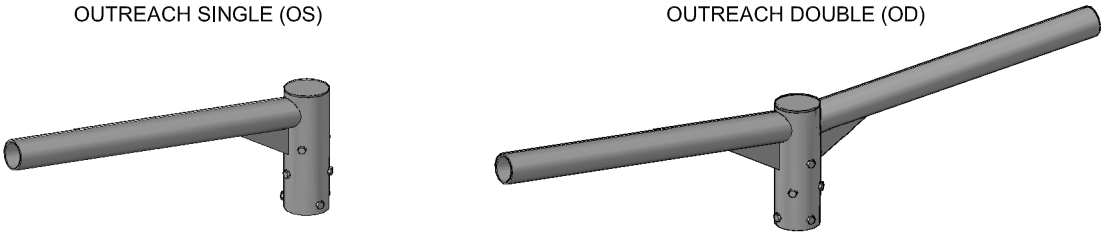
Column type	H Height	TAP Top across points	TAF Top across flats	BAP Bottom across points	BAF Bottom across flats	FS Flange size	FT Flange thickness	HD Hole ϕ	HC Hole centers	RB Rag bolt sizes	DW Door width	DH Door height	EC Electrical Chamber	LC Locking Chamber	MT Material thickness	MG Material grade	Mass (Kg)
OHFC4X76	4000	76	68	168	155	400	10	24	300	M24X500	105	400	1500	450	3	S275	70
OHFC5X76	5000	76	68	168	155	400	10	24	300	M24X500	105	400	1500	450	3	S275	80
OHFC6X76	6000	76	68	168	155	400	10	24	300	M24X500	105	400	1500	450	3	S275	100
OHFC7X76	7000	76	68	216	200	400	20	24	300	M24X500	105	400	1500	450	3	S275	154
OHFC8X76	8000	76	68	238	220	400	20	28	300	M28X1000	120	624	1500	600	3	S355	197
OHFC10X76	10000	76	68	260	240	400	20	28	300	M28X1000	120	624	1500	600	3	S355	230



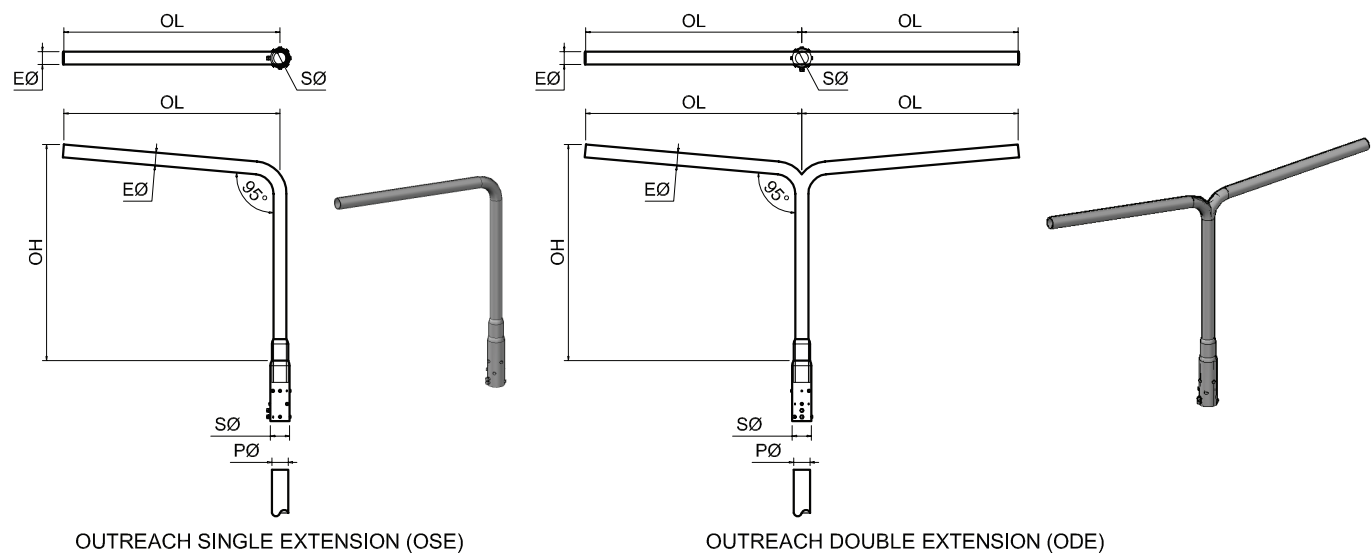
OUTREACH SINGLE (OS)



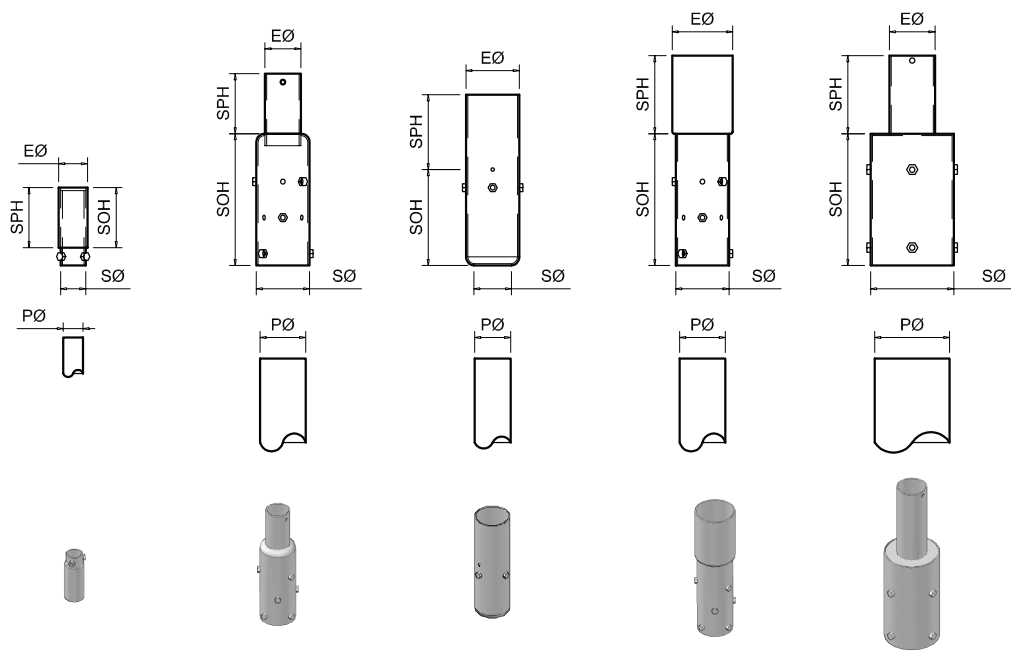
OUTREACH DOUBLE (OD)



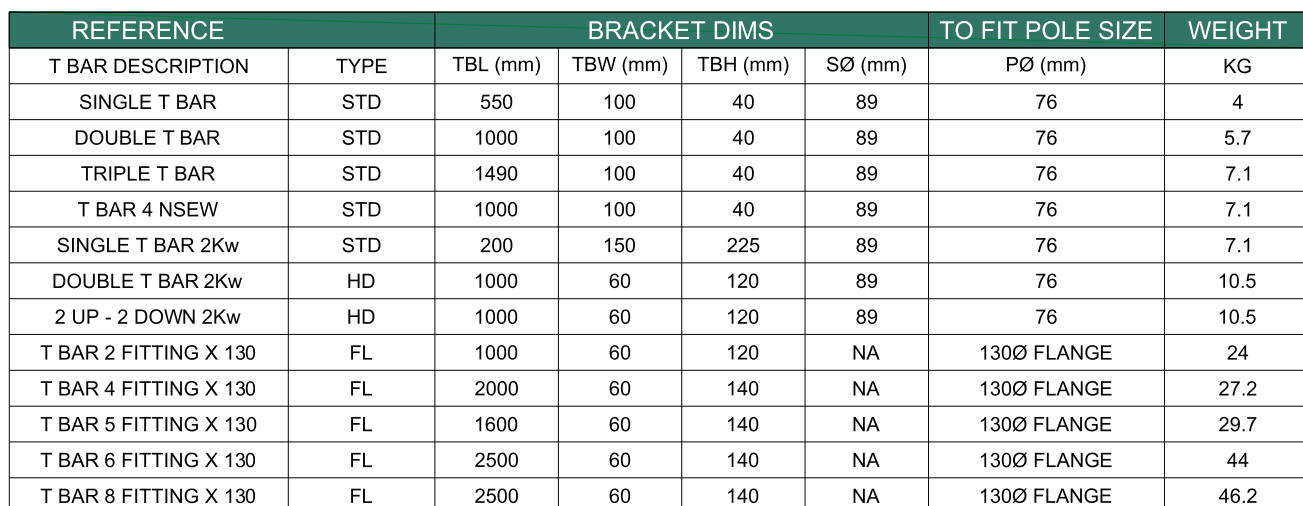
REFERENCE	BRACKET DIMS				TO FIT POLE SIZE	WEIGHT (Kg)	
OUTREACH DESCRIPTION	OL (mm)	EØ (mm)	SØ (mm)	SH (mm)	PØ (mm)	OS	OD
OS / OD 150X42	150	42	89	250	76	2.6	3.3
OS / OD 150X60	150	60	89	250	76	2.9	3.5
OS / OD 300X42	300	42	89	250	76	3.1	3.6
OS / OD 300X60	300	60	89	250	76	3.9	5.5
OS / OD 500X33	500	33	89	250	76	3.5	5.3
OS / OD 500X42	500	42	89	250	76	4.1	6
OS / OD 500X48	500	48	89	250	76	4.4	6.5
OS / OD 500X60	500	60	89	250	76	4.9	7.4
OS / OD 700X33	700	33	89	250	76	4.2	6.1
OS / OD 700X42	700	42	89	250	76	4.7	7.1
OS / OD 700X48	700	48	89	250	76	5.1	8
OS / OD 700X60	700	60	89	250	76	5.8	9.2
OS / OD 1mX42	1000	42	89	250	76	5.7	9.1
OS / OD 1mX48	1000	48	89	250	76	6.3	10.2
OS / OD 1mX60	1000	60	89	250	76	7.3	12.2
OS / OD 1.5mX42	1500	42	89	250	76	7.4	12.5
OS / OD 1.5mX60	1500	60	89	250	76	9.7	17.2
OS / OD 2mX42	2000	42	89	250	76	9	15.8
OS / OD 2mX60	2000	60	89	250	76	12.2	22

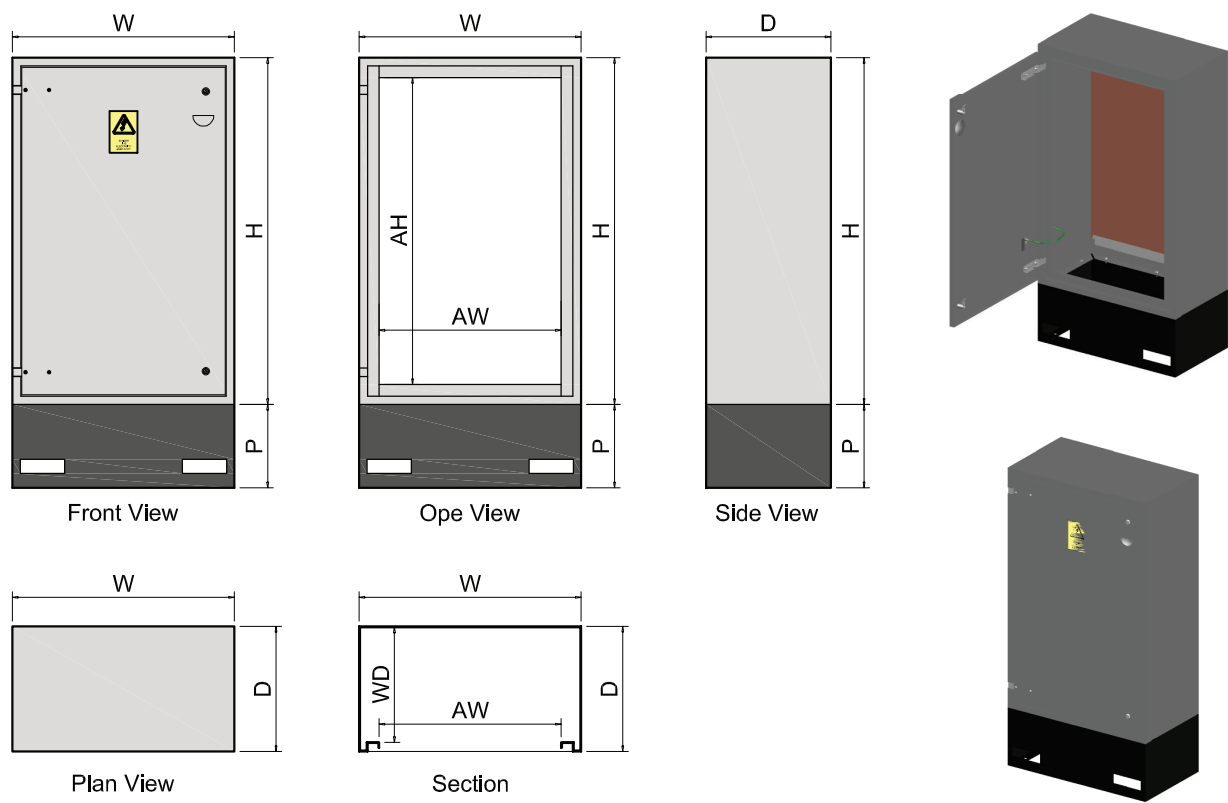


REFERENCE	BRACKET DIMS				TO FIT POLE SIZE	WEIGHT (Kg)	
DESCRIPTION	OH (mm)	OL (mm)	EØ (mm)	SØ (mm)	PØ (mm)	OSE	ODE
OSE / ODE 1mX1mX42	1000	1000	42	89	76	13.2	19
OSE / ODE 1mX1mX48	1000	1000	48	89	76	13.3	19.2
OSE / ODE 1mX1mX60	1000	1000	60	89	76	12.7	18.5
OSE / ODE 2mX1mX42	2000	1000	42	89	76	18.1	24.4
OSE / ODE 2mX1mX60	2000	1000	60	89	76	17.6	23.4
OSE / ODE 2mX2mX42	2000	2000	42	89	76	23	34.2
OSE / ODE 2mX2mX60	2000	2000	60	89	76	22.5	33.2

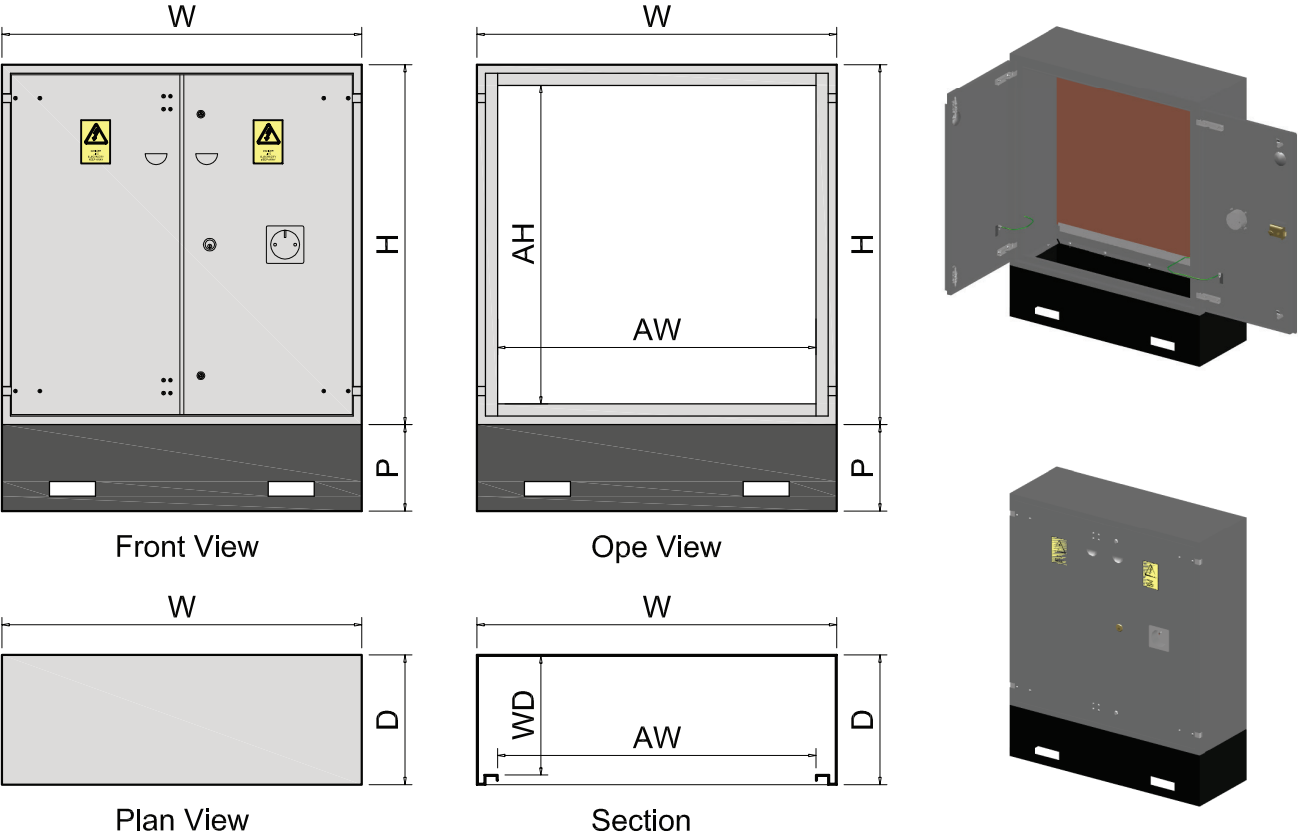


REFERENCE	ADAPTER DIMS				TO FIT POLE SIZE	WEIGHT
ADAPTER DESCRIPTION	SØ (mm)	EØ (mm)	SPH (mm)	SOH (mm)	PØ (mm)	Kg
A 33 X 48	42	48	100	130	33	0.8
A 76 X 60	89	60	130	250	76	2.9
A 60 X 76	63	76	130	160	60	1.77
A 76 X 101	89	101	130	250	76	3.2
A 76 X 114	89	114	130	250	76	3.5
A 89 X 60	101	60	130	250	89	2.8
A 89 X 76	101	76	130	250	89	3
A 139 X 60	139	60	130	250	x	3.5
A 139 X 76	139	76	130	250	x	3.7

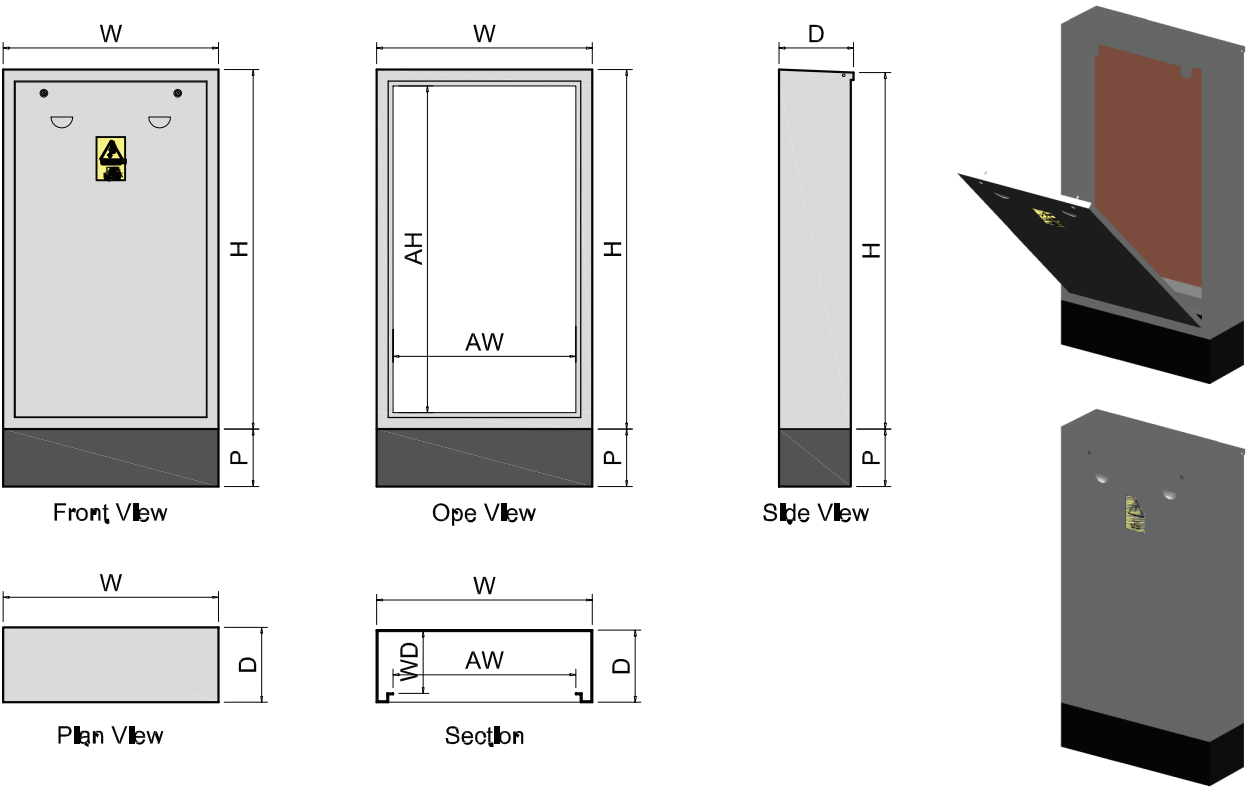




REFERENCE		EXTERNAL DIMS				WORKING DEPTH	DOOR APERTURE		WEIGHT
DESCRIPTION	CODE	H	W	D	P	WD	AH	AW	KG
Gear Tray Pillar	PG4	1250	350	260	200	205	1136	236	83
Gear Tray Pillar	PG6	1250	750	260	200	205	1136	636	97
Gear Tray Pillar	PG9	1250	950	260	200	205	1136	836	141



REFERENCE		EXTERNAL DIMS				WORKING DEPTH	DOOR APERTURE		WEIGHT
DESCRIPTION	CODE	H	W	D	P	WD	AH	AW	KG
Double door	PD1.25X1.25X.45	1250	1250	450	300	402	1105	1105	165
Double door	PD1.6X1.25X.45	1600	1250	450	300	402	1455	1105	260
Double door	PD1.6X1.6X.45	1600	1600	450	300	402	1455	1455	270
Double door	PD1.6X2.0X.45	1600	2000	450	300	402	1455	1855	290
Double door	PD2.0X2.0X.45	2000	2000	450	300	402	1855	1855	320



REFERENCE		EXTERNAL DIMS				WORKING DEPTH	DOOR APERTURE		WEIGHT
DESCRIPTION	CODE	H	W	D	P	WD	AH	AW	KG
Single door	PD0.6X1.25X.45	1250	600	450	300	402	1105	455	100
Single door	PD0.8X1.25X.45	1250	800	450	300	402	1105	655	125

Project Gallery







